

MK12 AND FITC PROUDLY PRESENT

"FOLLOW THE SUN!"

"SIZZLING HOT!"

IN 4D!



SWEDISH



SECRETS



THIS MOTION PICTURE "TITLE T.O.D." IS ALL RIGHTS RESERVED AND ©2010. ALL PORTRAYALS OF PERSONS EITHER LIVING OR DEAD IS STRICTLY COINCIDENTAL AND DOES NOT REFLECT THE INTERESTS NOR OPINION OF SPARKLEMOTION, SWEDISH SECRETS PRODUCTIONS, THE GRAND LODGE OF LINGUISTIC AFFAIRS, THE COUNCIL FOR PHONETIC PRESERVATION, ADJUNCT PHONETIC SOCIETY AND THE ROYAL TYPOGRAPHIC HERITAGE FOUNDATION. THESE ENTITIES WISH TO THANK THE MANY PEOPLE WHO CONTRIBUTED TO THIS FILM. WITHOUT WHOM THIS PROJECT WOULD NOT HAVE BEEN POSSIBLE. WE ALSO EXTEND A SINCERE THANKS TO THE CONTINUING EFFORTS OF THE COUNCIL FOR PHONETIC RESEARCH AND PRESERVATION AND THE ROYAL TYPOGRAPHIC HERITAGE FOUNDATION FOR THEIR CONTINUING SUPPORT OF THIS PROJECT AND IT'S EFFORTS.

• ELECTRONIC PRESS KIT •

·SYNOPSIS·

FOR ENJOY!

WHILE WE HAVE A FEW MINUTES BEFORE THE NEXT SHOW, WHY NOT TREAT YOUR FAMILY TO SOMETHING SPECIAL AT OUR REFRESHMENT STAND? WE HAVE ALL KINDS OF TASTY TREATS -- A HOT, DELICIOUS PIZZA FOR DAD, ICE-COLD REFRESHMENTS FOR MOM, FRESH POPCORN FOR JUNIOR, AND MILK BOMBS® FOR SIS! TEMPT YOUR TASTE BUDS TODAY WITH OUR WIDE SELECTION OF SWEETS AND ALL-AMERICAN BEEF PRODUCTS!

BUT HURRY -- THE SHOW'S ABOUT TO BEGIN! JUST "*FOLLOW THE SUN*" DOWN TO THE REFRESHMENT STAND!



POPCORN FOR ALL!
HELL'S ON IT'S WAY!

"HOW YOU ARE FALLEN FROM HEAVEN,
O DAY STAR, SON OF DAWN!"
- ISAIAH 14:12



COME ON TAKE A STROLL COME DOWN TO THE SNACK BAR WHY NOT HAVE A REAL GOOD TIME
THERE FOR SNACKS AND ENJOY FOR ALL ETERNITY!

·CREDITS·

PRODUCED, WRITTEN & DIRECTED MK12

SOUND DESIGN MK12

CEL FRAME ANIMATION TJ FULLER

ADDITIONAL CAMERA JASON CANTU / OUTPOST WORLDWIDE

VOICE TALENT MICHAEL ASHCRAFT

• PRODUCTION NOTES •

MK12 IS ALWAYS HAPPY TO FIND INSPIRATION IN ALL THINGS COPYRIGHT-FREE, AND THEIR LATEST VENTURE, *FOLLOW THE SUN*, IS NO EXCEPTION. CREATED AT MK12'S KANSAS CITY-BASED ANIMATION STUDIO, IT CONCERNS A COUPLE OF HOT DOGS, A BAG OF POTATO CHIPS, AND OTHER ASSORTED SNACK ITEMS AS THEY ARE BESIEGED BY THE END TIMES.

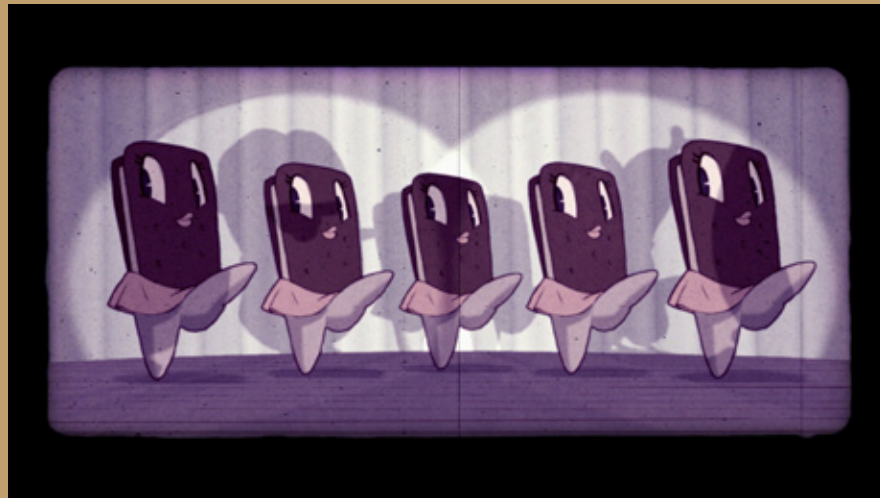
FOLLOW THE SUN IS AN HOMAGE AND/OR AFFRONT TO A GREAT AMERICAN TRADITION: THE INTERMISSION REEL. THOSE WHO WEREN'T MAKING OUT IN THE BACK OF THE FAMILY BUICK BETWEEN FILMS AT THE DRIVE-IN WILL REMEMBER THEM: POORLY-SPLICED, UNDEREXPOSED & OVERPLAYED

GRINDHOUSE REELS OF SICKLY GREEN HOT DOGS, UNPROVOKED PIZZA-GROPING, ICE CREAM SUNDAES WITH A VOMIT OF PALE, LIFELESS TOPPINGS, AND PERVERSE SIGHT GAGS FEATURING ANIMATED SNACKS IN PG-13 SCENARIOS. MK12 INTERESTED THEMSELVES IN THIS FORMAT, AND ENVISIONED ITS SLIGHTLY DARKER, BUT PERHAPS MORE-TO-THE-POINT, R-RATED COUSIN.

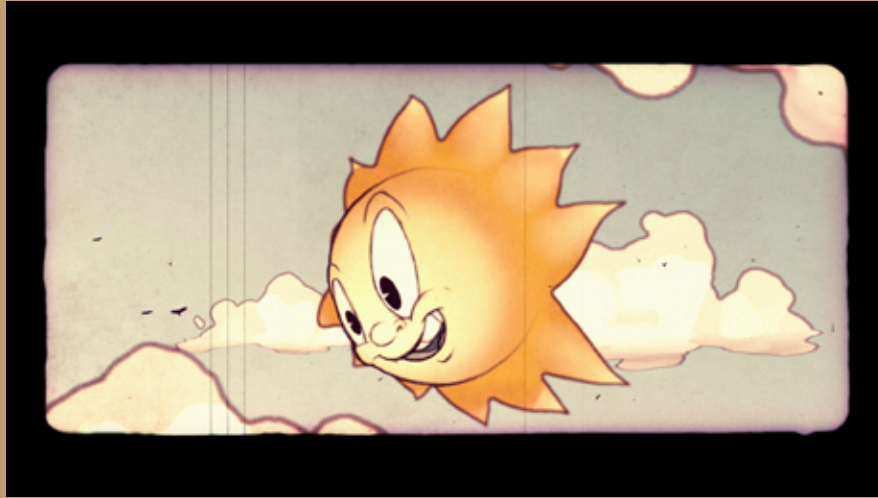
WHILE INSPIRED BY THIS FORMAT, EVERY FRAME OF FOLLOW THE SUN IS ORIGINAL. OVER THE COURSE OF THE PRODUCTION, MK12 BECAME EXPERTS IN STOP-FRAME POTATO CHIP ANIMATION, CHERRY CORDIAL INCINERATION, SLOW-MOTION SNO-CONE BLOODBATHS AND GUMDROP MANSLAUGHTER.

MONTHS BEFORE, MK12 MET CEL-FRAME ANIMATOR AND CALARTS WUNDERKIND TJ FULLER, WHO AGREED TO COLLABORATE WITH THEM ON THE PROJECT. IN ALL, TJ CONTRIBUTED OVER 900 ORIGINAL ILLUSTRATIONS TO THE FILM, OFTEN SENDING DRAWINGS ALONG IN THE EARLY MORNING HOURS JUST AS DECENT FOLK WERE GETTING UP. MK12 WOULD TAKE THESE ILLUSTRATIONS AND PLACE THEM INTO SETS DESIGNED IN THEIR KANSAS CITY STUDIO, AND THOSE SCENES WERE THEN CUT INTO A LARGER INTERMISSION REEL, FEATURING A CAST OF LIVE-ACTION AND STOP FRAME CHARACTERS.

• PRODUCTION STILLS •



• PRODUCTION STILLS •



·BIOGRAPHY·

BASED IN KANSAS CITY, MISSOURI, MK12 IS A DESIGN AND FILMMAKING COLLECTIVE WITH ACCLAIM IN BOTH COMMERCIAL AND ARTISTIC ARENAS. FOUNDED IN 2000 BY ART SCHOOL REFUGEES JED CARTER, TIMMY FISHER, MATT FRACTION AND BEN RADATZ AND LATER JOINED BY DESIGNER / COMPOSER SHAUN HAMONTREE AND COMPUTER GURU CHAD PERRY, MK12'S WORK CONSTANTLY CHALLENGES THE BOUNDARIES BETWEEN NARRATIVE STRUCTURE AND EXPERIMENTAL STORYTELLING VIA JUXTAPOSITIONS OF LIVE ACTION, GRAPHIC DESIGN, NOSTALGIC INFLUENCE AND NEW TECHNOLOGY. MK12 HAS BEEN SOUGHT AFTER TO DIRECT NUMEROUS

COMMERCIAL & NETWORK-BASED PROJECTS AND HAS BEEN INVOLVED WITH SEVERAL GAME PROMOTIONS & CINEMATICS, MOST RECENTLY FOR HARMONIX'S BEATLES & GREEN DAY ROCK BAND ENTRIES AS WELL AS MICROSOFT'S FLAGSHIP GAME ALAN WAKE. MK12 HAS ALSO PROVIDED TITLE SEQUENCE DESIGN & IN-FILM GRAPHIC FX FOR FEATURE FILMS SUCH AS STRANGER THAN FICTION, THE KITE RUNNER, HOLY WARS AND QUANTUM OF SOLACE.

MK12'S EXPERIMENTAL & SHORT FILM CATALOGUE HAS BEEN FEATURED IN MANY INTERNATIONAL FILM FESTIVALS AND SHOWCASED IN DESIGN AND TRADE JOURNALS WORLDWIDE. MOST RECENTLY, THEIR

SHORT FILM "OVERLOAD" -- A COLLABORATION WITH NY-BASED PAINTER BRIAN ALFRED -- WAS INDUCTED INTO THE GUGGENHEIM'S PERMANENT COLLECTION.

MK12 FURTHER EMPLOYS THE TALENTS OF HEATHER BRANTMAN, TEDDY DIBBLE, JAMES RAMIREZ AND SHAWN BURNS.

MK12 CONTINUES TO PRODUCE ORIGINAL CONTENT FOR TELEVISION AND CINEMA, RECENTLY CREATING "MK12'S HISTORY OF AMERICA", WHICH SCREENED AT SUNDANCE IN 2008 TO GOOD REVIEWS, AND ITS LATEST SHORT FILM, TELEPHONEME. MORE INFORMATION ABOUT THIS AND OTHER PROJECTS CAN BE FOUND AT MK12.COM.

ADDRESS: 1718 HOLMES STREET KANSAS CITY, MO 64108

PHONE: 816.931.2425

FAX: 816.842.6299

EMAIL: INFO@MK12.COM

WEB: WWW.MK12.COM

CONTACT: TEDDY DIBBLE, TEDDY@MK12.COM

REPRESENTATION VIA THE EBELING GROUP: INFO@THEEBELINGGROUP.COM